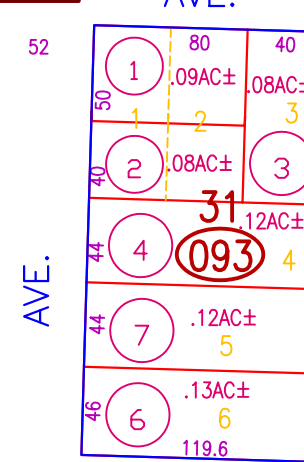
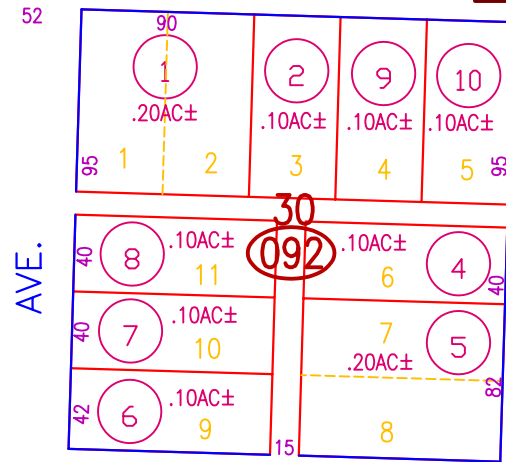
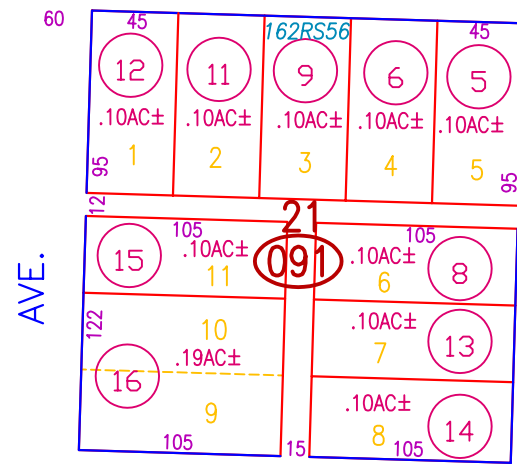


WYANDOTTE

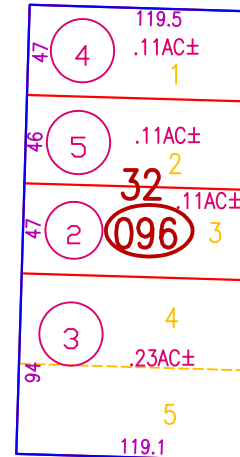
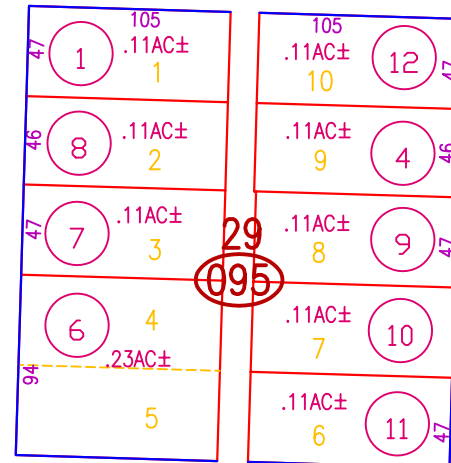
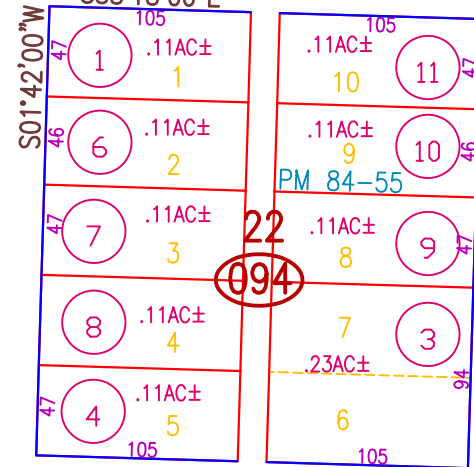
13-24

AVE.



A

S88°18'00"E

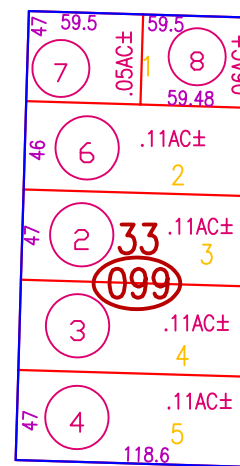
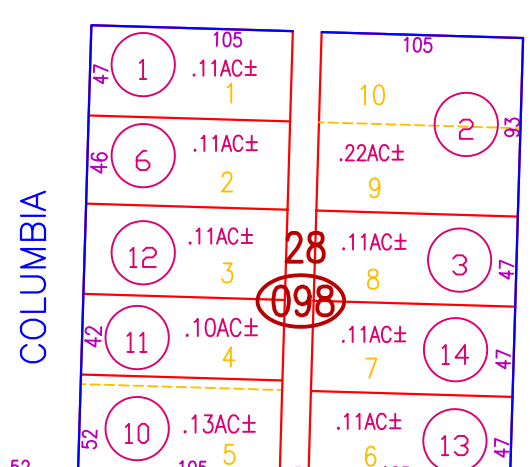
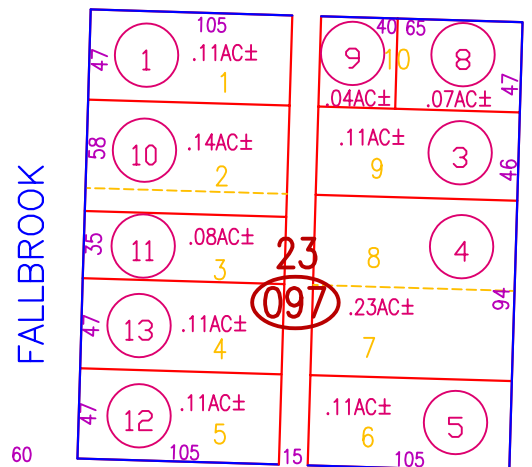


1  
5.50 AC

36-81

B

ST.



C

ST.

08

11

12



Butte County Assessor's Map Book 35, Page 09

NOTE: These parcels are for assessment purposes only and may not constitute legal parcels.

CREATED BY	CREATED ON 11-28-2000
REVISED BY SDT	REVISED ON 11-28-2000
	EFFECTIVE 2001-02 ROLL
Previous Book , Portion Of Page	
Compiled By The Butte County Assessor's Office	

BOWERS ADDITION 7 M.O.R. 15

281.2

SEC. 17  
SEC. 16